

VILLAGE NEWS

OCTOBER 2022





Seahouses Community Hub

Hub & Library Opening times

Monday – Thursday

10am – 12.30 pm. & 1.30pm - 3pm

Monday Mature movers 1.30 – 2.30pm

Tuesday 2-4pm Proggy mats, crafts & games

Tuesdays 1th October & 8th November Bell View Fish & Chip lunch
doors open 11am

Thursday 10am-12pm Bell View coffee mornings.

Seahouses Development Trust

The Hub

Stone Close

Seahouses.

Tel: 01665 721868

Email: sdt@seahouses.org

Why not save with the Credit union ?

The Credit Union will be at the Hub

On the second Wednesday of every month

2.30pm – 3.30pm

For more details please call Seahouses Development Trust

01665 721868



See How They Run
Saturday 8th October
6pm

In the West End of 1950s London, plans for a movie version of a smash-hit play come to an abrupt halt after a pivotal member of the crew is murdered.



Ticket to Paradise
Saturday 22nd October
6pm

A divorced couple that teams up and travels to Bali to stop their daughter from making the same mistake they think they made 25 years ago.



Mrs Harris Goes to Paris
Saturday 5th November
6pm

A widowed cleaning lady in 1950s London falls madly in love with a couture Dior dress, and decides that she must have one of her own.



The Lost King
Saturday 19th November
6pm

An amateur historian defies the stodgy academic establishment in her efforts to find King Richard III's remains, which were lost for over 500 years.

Doors open 30mins before advertised screening times.
Programme, dates, times, BBFC certificates and running times are all subject to change..
We reserve the right to alter the advertised schedule. Please book early to avoid disappointment.



**Seahouses Cinema
t Seahouses Hub**

Tel:01665 721868



**Matinee
Wednesday 19th October
1.30pm
(Doors open 1pm)**

**Free cup tea or coffee with cake & biscuits
£5**

**Cinema shop will also be open for drinks,
sweets and ice cream**

Doors open 30mins before advertised screening times. Programme, dates, times, BBFC certificates and running times are all subject to change. We reserve the right to alter the advertised schedule. Please book early to avoid disappointment.

Village Festive Lights

‘Switch on’

Thursday 17th November

Festive songs on the Main

Street - Around the

Christmas tree

From 6pm

Tea, Coffee, Mince Pies,

AFTERWARDS

at ‘HOOK’ Fish n Chip Shop

Please Come along &

support our local event

Merry Christmas from

The Festive Lights Team

‘Seahouses Festive Lights’

????????????????????

Our volunteers are now starting to get this year’s

Festive Lights organised for the Switch On.

Would you like to sponsor a lights feature around our
village??

If so, we would love to hear from you, so please contact:-

Ian Clayton 07981069177 Gerald Angus 07711 957655

Sarah Liddell 07376249914 or any member of the team

Thank you for your support.

NORTH SUNDERLAND AND SEAHOUSES WI

Our July meeting was very well attended by members. We were entertained by Andy Craig (Photography) who provided a musical backdrop by accompanying his slide shows of themed local photography with his acoustic guitar and song. His sessions included a photographic journey from "Berwick to Amble", "Patterns and Textures in Nature" a video of "The Skaith Pond" at Dunstanburgh Castle Golf Club at sunrise and the changing scenes of our coastal area during "Spring 2022". Andy ended the evening's entertainment with a rendition of the Grace Darling song "Never Been Kissed". A huge thank you to Andy from us all. Our President Judith Stephenson thanked the members for all their help in making Junes Queens Platinum Party so successful and the WI Monday Walking Group for keeping the Sea houses Queens Platinum Jubilee flower bed looking so lovely. In July many of our members were pleased to attend the Regional Roadshow at Bamburgh Pavilion where Marj Read the Federation Chairman thanked the local WI's present for their support of the Federation. In September we were all enthralled by Louise Percival a local acupuncturist who delivered a very interesting session on the history, features and benefits of acupuncture and how it can be used to support medical and lifestyle needs often complimenting medicinal and physical interventions.

Our programme for the coming months is looking interesting with John Sim joining us in October to enlighten us on the role of a police dog handler and in November, Richard Sanderson entertaining us with tales of "The Tetley Beer Man".

We continue to meet for coffee and cake at Coffee 1, Sea houses at 10.30 on the 3rd Tuesday of the month, non-members welcome to join us for a chat. Our next WI meeting will be held at Sea houses Social Club at 7pm on Tuesday the 4th October.

Please feel free to come along and join us for the evening, you will be made very welcome.

Fish & Chip lunches



Bell View will be running a Fish and Chip Lunch at Seahouses Hub on the following dates:

**Tuesday 11th October
Tuesday 8th November.**

We will be open from 11am and need people to arrive by 11.30 so we know how many lunches to order. £7 to include lunch, tea, coffee and biscuits. Telephone 01665 721868



**Want some gentle exercise?
Chair based exercise to music at Seahouses Hub
Mondays**

1.30– 2.30pm

**For further details contact Seahouses Development Trust
Tel: 01665 721868**

Seahouses Lunch Club

We are a lunch club for people living on their own in the village .
We meet every Wednesday at St Paul's Hostel at 12 noon
We currently have places available.

If you would like to join us please contact:
Margaret Sanderson 720142 .



The Parish of North Sunderland and Seahouses
Parish Survey – Progress Update September 2022

Background

This time last year the Parish Council conducted a Parish Survey to find out which issues were of most concern to people and also to capture any ideas people may have had to make improvements to our village. This was done to make sure that the Council was focussed on those areas which were most important to its parishioners.

Although there was a disappointing number of people who responded to the survey, there were certain themes which were mentioned numerous times by those that did complete the survey.

Over half of those responding thought *parking* was a major problem in the village especially with many visitors parking on residential streets.

A third were concerned about *road safety* and wanted stricter speed restrictions with better signage, together with one or two zebra crossings.

A third mentioned *litter bins*, in particular the number, type and location, as well as the need to keep the village and beaches tidy.

A number of people mentioned the desirability of improving the facilities at our *beaches*, and of improving the facilities for *cyclists*.

Other significant issues raised were potential community uses for the '*Old First School Site*', and the problem of *insufficient social housing*, caused mainly by the predominance of holiday lets.

Although the Parish Council does not have the powers to directly resolve many of the issues raised, it has and will continue to address those items which it can progress itself and to work with the County Council on those which need County Council action.

It should be noted that the Parish Council only has direct responsibility for:
North Sunderland cemetery,
Some public seats and benches, and
Litter bins

In addition, it receives reports from the Police and members of the public on areas of concern, and assesses and comments on all local Planning Applications that have been submitted to the County Council.

A full account of the Council's activities can be seen in the minutes of monthly meetings published on the Council's website at <https://northumberlandparishes.uk/northsunderland>.

Progress to date

The following is a short summary of specific actions which have been taken by the Parish Council in response to the Parish Survey:

Parking: Following an assessment of current and proposed parking restrictions, a list of 5 new schemes have been passed to NCC for consideration. Proposals for some 'overflow' parking outside the village are also being explored.

Road Safety: Suggestions for lower speed limits and better signage have been passed to NCC, as have requests for road repairs.

Litter Bins: The siting and maintenance of the parish councils' bins have been under constant review, and improvements have been made wherever possible. (Note: Bins on the harbour and at the entrance to beaches are outside our jurisdiction. In respect of general appearance and tidiness, the parish council supports the efforts of the volunteer groups who are active in the village and on the beaches)

Beaches: Comments and suggestions for improvements have been passed to the National Trust for consideration.

Cycling: A major project to clear the 'old railway line' path and lay a new surface was successfully undertaken. This pathway, like the refurbished lonnen, is now accessible for wheelchairs and buggies as well as cyclists and walkers.

Old First School Site: The Parish Council has pressured NCC to resolve the future of this site and there are currently discussions underway to use the site to provide affordable housing.

Social Housing: Wherever possible the Parish Council has been supportive of any scheme that would deliver more affordable housing in the village, and in particular *social housing for rent*.

What next?

The Parish Council will continue its efforts to improve the quality of life in Seahouses and North Sunderland for residents and visitors alike.

To make sure that parishioner's concerns continue to be addressed, a new Parish Survey will be undertaken next year.

In the meantime, if any parishioner wants to bring an issue or proposal to the Council's notice they are welcome to attend any of the monthly meetings of the Council and need to contact the Clerk via email nspcseahouses@gmail.com or telephone 07866566415. (Minimum of 7 days notice of request to address the PC is required to ensure items are listed on agenda and correct amount of time is allocated)

North Sunderland & Seahouses 38th Annual Village Show

Following a two year absence we were able to hold this year's Village Show.

Hopefully this won't be our last!


Thank you to everyone who exhibited, volunteered and came along on the day. We did have an excellent day with tremendous feedback about the friendliness and wonderful atmosphere of the day. It was nice seeing everyone who came up in the afternoon to support us. We did have a few classes where the entries weren't as many as previously but this didn't distract from the overall day itself. The judges commented that the standard was high.

One of the best things is seeing the children's entries. They always amaze me and certainly bring a smile to your face and the children love getting their winning rosettes. We are fortunate that both Seahouses Primary School and Busy Bees encourage the youngsters to take part.

We aren't the biggest Show but we are a good Show and it would be terrible for it to fold. Jim Williamson the Chairman and Liz Moor, Secretary, are stepping down this year from these roles but will remain on the committee if volunteers come forward.

Anyone interested in joining the committee can contact :

Liz on 07814672429 (including WhatsApp)

or message via their  page North Sunderland and Sea houses Gardening Association (Village Show).

**Our AGM is on Thursday, 13th October at 7pm,
at Stone Close Community Centre.**

All welcome.



Beadnell in Bloom for October Village News

Last month's rain was really welcome for anyone trying to grow plants; I would like to extend thanks to everyone who watered village planters either as official adopters or as "supply cover" when people were away. The displays have been good and the new lavender has really taken well.

October is going to be busy – we have 2,000 miniature daffodils to plant on two of the edges of St Ebba's Way Green. Many thanks to the Northumberland County Council Grounds Maintenance team for their support with procurement but the actual planting will be down to us. Thanks also to the team of diggers who "rescued and repurposed" a boat that was no longer seaworthy – this is going to provide a source of culinary herbs for St Ebba's Way and Longbeach Drive residents.

There will be a general call out on Friday 21st October and Saturday 22nd – the task will be to remove the summer planting and re-fill the boxes with bulbs, evergreens and daisies that should see us through to May 2023. Volunteers please gather at the phone box at 10am.



BEADNELL
COMMUNITY VOLUNTEERS

What a fantastic end to the summer season with the well attended August Bank Holiday Weekend car boot sale. Fantastic to see so many regulars, residents and visitors to the area. All in all an amount of over £1300.00 was raised, with the cake stall making over £300! Thank you to everyone who supported and attended, we couldn't do without you.

Is it too early to mention Christmas? Our next event will be the Christmas Lights switch on in the Bull Ring, the date will be confirmed in the next Village News.

Don't forget, all our events are run by volunteers, if you would like to join in to help please email Caroline at

bcvsecretary2021@gmail.com

BEADNELL Soup and Sandwich Lunch

Bell View are running a soup and sandwich lunch on the first Tuesday in every month in the Beadnell WI hall. (Apart from September 2022).

Home made soup, sandwich, cake, tea/coffee. All for £5.00.

Harbour Artists

Art Group meets in The Methodist Chapel Hall
Tuesday mornings between 10am and 12.00pm.

Painters or crafters will be made welcome
in this friendly group.



Beadnell Beach Run



Every Saturday at 9am
Meet at the Carpark

Email: beadnellbeachrun@hotmail.com



Beadnell Beach Run

Timely Garden Tips. October and November 2022

The first leaves start to fall from the trees. These are not litter but a valuable free resource in the garden. Remove from paths but collect in sacks or bin bags and store in a corner until next year to produce leaf mould. The leaves need to be damp and the bags have some holes. If not, then add leaves to compost bins or pile them up on flower beds for the worms to pull them underground and do the work for you.

Lift and store dahlias or add a thick layer of compost or chipped bark if still in the ground to protect them from cold and wet during the winter.

Clear away dead annuals and soggy leaves which hide slugs. But leave any seedheads and standing stems to provide shelter for ladybirds and other insects.

Sow sweet pea seeds in October and grow on in a cold frame or cold greenhouse for extra early flowers. Nip out the growing tip when a few inches high for bushy plants. But protect seeds from hungry mice!

Prune climbing roses back to a framework with shoots tied in nearly horizontal to encourage new flowering shoots. Clear away any dead rose leaves from under the plant to help prevent blackspot next year. If this is a problem, start spraying early before any signs of blackspot show.

Scrub birdfeeders and birdbaths regularly with hot soapy water to prevent the build up of diseases.

Turn off outdoor taps at the mains and drain these and hosepipes before frost arrives to prevent damage

Lift large planters up on 'feet' or bricks to improve drainage and prevent waterlogging.

Consider planting small bulbs such as crocus and scillas in the ground in the shape of a child's initials, house number or, if romantic, a heart, for a surprise next spring. Remember to leave the leaves to die back naturally afterwards to get a repeat performance every year.

Bamburgh village 'opens its arms' to an exciting autumn with much needed rain leading to a 'greening up' of gardens, lawns, fields and community grassed areas. Trees and bushes are laden with berries and hips and fruit trees are heavily laden with plums and apples to the delight of birds preparing perhaps for a hard winter. For village dwellers there is much to look forward to during the coming colder months. A newly equipped children's play area will start construction in October and a refurbished pavilion, **Bamburgh's** community centre, will lead to its closure in January, February and March but will provide eventually a much needed disabled toilet and other facilities to this well used venue. Indoor activities will begin to take precedence over outdoor pursuits with the Scottish Country dancing starting again in October, Indoor bowls at the end of September and Mah Jong on Friday September 30th at 2pm in the Castle Inn. The **Bamburgh** Belles/Bathers continue their wild swims during the winter but most swimmers will be donning wetsuits to combat the colder waters. St Aidan's church displayed a book of condolence for residents and visitors to sign in recognition of the death of the Queen and **Bamburgh** Women's Institute displayed flowers at the base of the Rowan tree planted to honour the Queen's 70 year reign and her membership of the Women's Institute. The Coast Book club members are very sorry to say a final farewell to past members Ethne Voigt and Joan Mason who with Gina Goldwater started the **Beadnell** book club (now the Coast book club) over 15 years ago, the fact that the book club continues to thrive is an acknowledgement of their efforts in setting up this monthly meeting to discuss an amazing variety of fiction provided by our wonderful library service. The Northumberland Touring Theatre Company once again returned to the pavilion in their version of Shakespeare's Macbeth. An amazing production enjoyed by everyone who attended and we are looking forward to their next show in **Bamburgh**. **Bamburgh's** oldest resident **Mim Woodeson** celebrated her 100th birthday with a party organised by her fellow **Womens** Institute members inviting her friends to share with them a slice of a magnificent birthday cake and a spot of bubbly. A lovely afternoon with a host of memories was shared by all who attended.



BAMBURGH PUMPKIN COMPETITION

FREE AND OPEN TO ALL

on THURSDAY OCTOBER 27th

in BAMBURGH PAVILION

Bring your carved pumpkin to display in the pavilion
from 10.30 am - 12.30

Members of the public, who view can cast their vote for the winning pumpkin.

All pumpkin entries to be collected by 2.30pm to take home for Hal-
loween celebrations

The Pavilion will be open for refreshments from 10.30 - 2pm

Bamburgh Christmas Lights

Saturday November 26th at 17:30 hrs
at St Aidans Church followed by a
blessing of the nativity.



Christmas tree switched on at 18:15 hrs



Farne Islands

On Sunday 3rd of July, the National Trust took the decision to close the Farne Islands to visitors due to the spread of Avian Influenza (Bird Flu) across seabird colonies in the UK.

Our rangers watched as significant numbers of dead and dying birds were found across the islands and members of the public reported washed up birds along the coastline.

Although the risk of bird-human transmission is very low, the threat of Bird Flu to our seabird colonies was, and still is, very worrying, considering that the Farne Islands are home to approximately 200,000 seabirds including Guillemots, Kittiwakes, Razorbills and Shag, and of course, Puffins. Closing the islands gave the rangers time to monitor the situation as it unfolded whilst clearing the carcasses of the birds who they work to protect.

Up until this point, around 5,400 carcasses have been removed for licensed disposal from Inner Farne, Brownsman and Staple Island, but many remain especially on the uninhabited islands such as the Wideopens.

This time without visitors further allowed the rangers to continue with their vital conservation work such as removing non-native invasive plant species, productivity monitoring of vulnerable bird species, and general island maintenance, albeit suited up in PPE, providing a spectacle for visitors passing by on the Billy Shiels, Serenity, and Golden Gate boats which continue to run sail-arounds from a distance.

The second half of our season on the Farne Islands has been more than we could ever have predicted; We have dealt with a wildlife tragedy on a scale which, at the beginning of the year we could never have imagined and hope very much that this won't become a recurring event on the islands, and are eager to welcome back visitors next year to share this special place again.

Written by Holly Appleby, Seasonal Ranger, Farne Islands.

Lindisfarne Castle

At Lindisfarne castle, we are still dealing with the effects of Storm Arwen, and have had a big piece of work happening this month, repairing damage over the last four years (culminating with Storm Arwen) to the north wall – the one that you can see from the garden.

The north elevation was first harled and limewashed back in 1996 to deal with significant water ingress and damp problems in the rooms behind it, and then in the major conservation project in 2016-18 (when the castle was covered by scaffolding) we repaired it and reapplied limewash, the sacrificial layer which weathers so the stone doesn't have to. There are five coats of limewash, with the two base coats being white; the idea is that when you start seeing white appear, you know that the top three pigmented coats have worn away and it is time for repairs. That process should take 10-15 years, but a couple of storms in 2019, the lack of any major works in 2020-21 for obvious reasons, and then the battering we took last November, has meant work has had to occur far earlier than we scheduled.

I think in 2018 we had envisaged that there might be an annual rope access inspection, and the operative might well have a small pot of limewash on his belt and a brush for merely 'touch-up' work, but nothing on this scale. It might be that if this upcoming limewash is worn away in less than 5 years, we will have to look again at the number of coats or the application method as it is an expensive way of maintaining the building. We do have to budget for this sort of work and obviously doing once every 10 years is very different to doing it once 2-3 years.

If you have passed by the castle in the last few weeks, then that all should explain why there were three or four people dangling off the roof painting the walls!

Written by Nick Lewis, Collections and House Officer, Lindisfarne Castle.

BACK TO BACH



Tuesday 25th Oct 7.30pm.

Residents' lounge

Blue Bell Hotel

Belford.

NE70 7NE

Two world-renowned musicians from Brazil will play music ranging from Bach to Brazilian. Belford is honoured to be part of their European tour.

David Chew – cello

Blas Rivera – saxophone.

Entry free

Donations to the RNLI

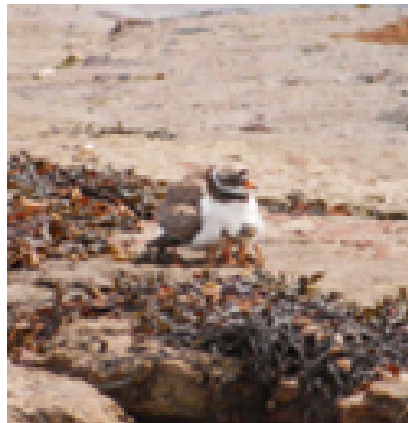
David Chew, twenty years ago, founded the International Cello Encounter in Rio de Janeiro. He was awarded the OBE for his work with children in the slums of Rio. As a professional cellist, he has toured the world.

Blas Rivera is one of Argentina's most important saxophone players as well as a pianist, arranger and composer.

Success for Nesting Shorebirds on the Northumberland Coast

In a summer that has been challenging for coastal wildlife, we are delighted to say that shorebirds have had a successful nesting season on the Northumberland Coast! 13 ringed plover chicks and 1 oystercatcher chick fledged from our nest protection sites, a fantastic achievement and a huge improvement from last year.

The Northumberland Coast is busier than ever, and it's unlikely that they would have been successful without intervention to protect their nests. A big thank you goes to the Coast Care volunteers who dedicated their time to help us throughout the season, and to local residents and visitors who gave space to the nest protection sites.



Ringed plover mother brooding her 4 chicks at Beadnell



Sanderling, returned from its breeding ground in the High Arctic

Our attention now turns to the shorebirds which are returning to the coast in internationally and nationally significant numbers from their breeding grounds. Our wildlife rangers will be out and about showing beach users the magnificent birds and explaining why it is important to give them space to feed and rest undisturbed. We will be running Shorebirds for Beginners events at various locations to discuss the birds in more detail and give tips on how to identify them. Details of the events will be published on our website over the coming months – www.spaceforshorebirds.co.uk.



Help for farmers, by farmers: regenerative agriculture videos

By Andi Chapple

UK farming is facing a perfect storm. Costs of inputs (for example fertiliser, pesticide and fuel) are soaring, weather patterns (and the climate) are changing and there is a new funding system for farmers to get used to.

You may have heard of 'regenerative' farming. It teaches us to see food production as integrated with nature and helps to build up local food systems. It can reduce inputs (and bring down costs), increase profitability and future-proof farm businesses. It suits upland livestock as well as market gardening and arable.

The Northern Real Farming Conference (NRFC) supports regenerative farming. With support from WWF-UK's Land, Food and Farming Fund, we have made a series of videos to help farmers research the approach. They show farmers talking about their experiences and offering concentrated practical advice on the profits and pitfalls of changing land management methods.

In 'Three Regenerative Farming Projects', Cumbrian farmers talk about how they have changed to 'rotational grazing' of sheep and cows - moving stock every day or two and letting the grass regrow - and how they now don't buy in feed or fertiliser and their farms are in profit.

In 'Local Wool and Textile Production', you can hear about the stories behind new Lake District tweeds, a British wool database for weavers and knitters and yarn making from sheep local to the shop.

The videos are available at www.northernrealfarming.org/video-resources/ and they are really worth a watch even if you don't farm yourself! Do have a look and join our farmers' network.

LINKS STEAK NIGHT

WEDNESDAY EVENING

6pm to 9pm

**Two Rib Eye Steaks &
a Bottle of Wine for**

£29.95

Served with vegetables and a choice of chips,
new or mash potatoes

Extras

Scallops in a garlic butter £8.95

3 x King Prawns in Garlic £8.95

Sauces £2.50 each

Pepper & Brandy Sauce

Stilton Sauce

Garlic Butter

Salad Bowl £3.45

Onion Rings £2.95

Mushrooms & Tomato £1.95

8 King Street, Seahouses, Northumberland NE68 7XP

Tel: 01665720062 / Email: linkshotel@hotmail.com

LINKS HOTEL, KITCHEN & BAR

TRADITIONAL SUNDAY LUNCH

TAKEAWAY / DELIVERY

Served 12 noon to 3.30pm

Orders can be taken Mon to Sat 9am to 6pm & Sun 9am to 3.00pm

Tel: 01665720062

STARTERS

Links Prawn Marie Rose Cocktail	£6.95
Links Pate of the Day <i>with crusty bread</i>	£5.95
Crispy Whitebait <i>with tartare sauce</i>	£6.45
King Prawns or Scallops <i>with garlic butter & crusty bread</i>	£8.95
Homemade Soup of the Day <i>with crusty bread</i>	£5.50
Battered Cod Goujons <i>with tartare sauce</i>	£5.45
Battered Chicken Goujons <i>with chilli dip</i>	£5.45

TRADITIONAL MAIN COURSES

Traditional Roast Beef	£10.95
Roast Pork with Stuffing	£10.95
Roast Turkey	£10.95
Duo of Meats - Beef and Pork or Turkey	£10.95
Vegetarian Sausage with vegetables & gravy (v)	£10.95
Vegetables Only Dinner	£9.00
Homemade Fish & Chips	£13.95

With either mushy or garden peas & homemade tartare sauce

Served with Homemade Yorkshire Pudding, Roast Potato & Freshly Cooked Vegetables

Child (12 or under)/OAP Beef, Pork or Turkey - £8.95

Specials of the Day - Please ask

Selection of Sweets

8 King Street, Seahouses, Northumberland NE68 7XP
Tel: 01665720062 / Email: linkshotel@hotmail.com

LINKS HOTEL, KITCHEN & BAR

CHRISTMAS 2022

CHRISTMAS DAY LUNCH

One Sitting from 1pm

Bucks Fizz on Arrival

Limited Numbers Available

Delivery Available Between 12 noon to 1pm

Menu Choices to be Pre Ordered

CHRISTMAS FAYRE

Served throughout December

Three Course Meal with Complementary Coffee &
Mince Pie

All Meals to be Pre Ordered

Add B&B at Special Price

Party Time:

Free "You be the Disco DJ" OR

Try a New Experience: Silent Disco (Extra charge &
Subject to Availability)

(Excludes Sunday & Monday Evenings)

Menus & Pricing to be Published October

All Enquiries:

Call 01665720062

Email: linkshotel@hotmail.com

To advertise in this space please
contact

Seahouses Development Trust

The Hub
Stone Close
Seahouses.

Tel: 01665 721868

Email: sdt@seahouses.org

Scott Thompson

**ROOFING, PLASTERING
& PROPERTY SERVICES**



@scottthompsonroofing



07501 519 356



Frankie & Twinkle's
Pet Supplies Ltd

Opening Hours

Mon/Thurs	Closed
Tues/Wed/Fri/Sat	09.00 – 17.00
Sunday	10.00 – 15.00

Where to Find Us

Unit 3C, Belford Industrial Estate

Belford

NE70 7DT

What3words: [///exonerate.adopters.rollover](#)

Contact Details

Phone:	Mal: 07576634371 or Ruth: 07846582092
---------------	--

THE NORTHUMBERLAND MOLE CATCHER

**SERVING NORTHUMBERLAND AND THE
BORDERS**

**100% Results Free Quotations
20 Years Experience
Friendly, Reliable Service
ALSO**

Collins Pest Control

COMPLETE PEST CONTROL SERVICES

Moles, rabbits, rats, mice, birds, ants, fleas, wasps,
flies, woodworm, bees & insects

Fumigation

**Unbeatable prices on spring traps, cage
traps & all poisons**

**Supplier of professional pest control
products and rodenticides**

RORY COLLINS Technician

Mobile: 07515 489119
Belford, Northumberland
rory@collinspestcontrol.co.uk



THE LAUNDRY LODGE

158A MAIN STREET, NORTH SUNDERLAND,
SEAHOUSES, NE68 7UA. TEL: 07808065800

PROFESSIONAL LAUNDRY OPEN TO THE PUBLIC

WALK IN SERVICE WASHES & PAY PER USE TUMBLE
DRYERS

CONTRACT AND ONE-OFF LINEN, HOLIDAY HOMES AND
B&Bs CATERED FOR.

LAUNDRYLODGESEAHOUSES@GMAIL.COM



Home from Home

Holiday Home Cleaning and Management

Domestic & Commercial Cleaning

homefromhomehousekeeping@gmail.com

Tel: 07432662647



PENROSES

AERIAL & SATELLITE INSTALLATION/SERVICE
TV WALL MOUNTING
PAT TESTING

ALNWICK

07876282537

gpenroseandsons@btinternet.com



Direct-Pets

Berwick Upon Tweed
Great Service, Expert Advice

Dogs Welcome

1000's of Products

Tel: 01289 302757

Off the A1 Near Morrison's TD151TU

Open

Mon-Sat 9am-6pm

Sun 10am-4pm

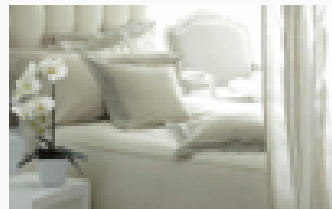
Seahouses Luxury Linen Hire

Do you own a holiday let or B&B?

Thinking of having to buy new bed linen & towels?

Our service can provide you with crisp white quality bed linen & fluffy towels to hire at very competitive prices and laundered to a very high standard.

Only pay for what you use.



Would you like to find out how the service works?

View samples and discuss your requirements?

Please contact: Tel:01665 721868

Email: sdt@seahouses.org

Save money and support the community

Seahouses Luxury Linen Hire Limited is a social enterprise wholly owned by Seahouses Development Trust, all the profits will be re-invested in the community.

All linen is washed in commercial washers that hold higher temperatures longer unlike domestic washers that only hold a 60 deg temp for a moment or two and that combined with more complex chemistry correctly dosed will kill 99.99% of potential hazards.

Coastal Blinds

Domestic. Contract. Commercial

Roller, Vertical, Venetian & pleated blinds.

Velux blinds approved installer.

Repairs, replacement vertical veins available

FREE QUOTATIONS & HOME VISITS

At a time that suits you.

Phone 01665 721188

07958 765853

E-mail genok55@hotmail.com

**We put the others in the shade for
quality & service**

Ian C. Seers

Painters & Decorators

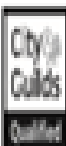
INTERNAL & EXTERNAL • PRIVATE & COMMERCIAL

Tel: 01665 722 815 Mob: 07852108025

Email: ian.seers@yahoo.co.uk



6 Castle Court, Seahouses Northumberland NE68 7BE



Hamilton Aerials

Frank Hamilton - Your Local Trusted Engineer

**Aerial, Satellite
& CCTV installations**

☎ 07981 646 846

✉ info@hamiltonaerials.co.uk

🌐 www.hamiltonaerials.co.uk



GSA PROPERTY SERVICES

A trustworthy service on your
doorstep For all your roofing,
coving, tiling, plastering,
facias and guttering

Gary Annison

T: 01665 720031

M: 07793 114178

Email:

gsapropertyservices@gmail.com

ALAN D. HAILE FUNERAL SERVICES

Tel: 01665 720258/720658

Mobile: 0777 552 4438

**All funeral requirements
professionally arranged**

Private Chapel of Rest

24 hour service - 7 days a week

Catering and floral tributes

Pre-payment plans

Memorial stones arranged

5 James Street

Seahouses, NE68 7XZ

Herbie

Alan Herbertson

07981 849542

herbie082@gmail.com

Property Maintenance

Clearing Gutters, Fencing,

Pressure Washing, Paving

& Painting

Any Job Considered

Advertise your business here.

Contact:

Seahouses Development Trust
The Hub
Stone Close
Seahouses

Tel: 01665721868

Or

Email: anne@seahouses.org



Useful telephone numbers



Doctors Surgeries Seahouses

Alnwick Medical group 01665 720294

Belford Practice 01665 720917

Dentist

The Dental Room, Belford 01668 213744

Citizens Advice

Northumberland Advice Line 03444111444

Age Concern Northumberland 01670 784800

Seahouses Tourist Information 01670 625593

Oil Can 01670 500812

Northumberland County Council 0345 600 6400

Seahouses Development Trust 01665 721868

Churches

St Aidan's , St Paul's and St Ebba's

Rev'd Canon Tony Macpherson 01665720202

Methodist Church

Rev'd Kim Hurst 01289 306291

St Aidans RC

Deacon David Smith 01665 720427



For safe crossing times to Holy Island go to:

<https://holyislandcrossingtimes.northumberland.gov.uk/>

Village News

**Copy deadline for the December 2022 issue is
Friday 25th November 2022**